

the Naledi3d Factory Moroka Dam Rehabilitation Project - Soweto (2002)

Purpose: To demonstrate proposed landscape changes at the Moroka Dam complex in Soweto and to canvas local stakeholder support / buy-in for the proposed development. This model was also showcased at the World Earth Summit, held in Johannesburg during 2002. It is also an example of our Plan Visualizer concept – which is aimed at producing low-cost visualizations of new or proposed land or building developments.



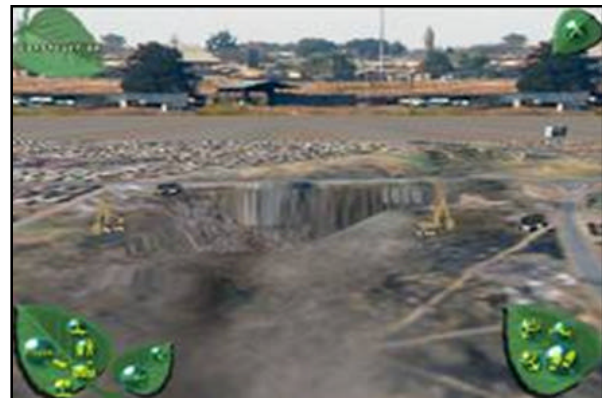
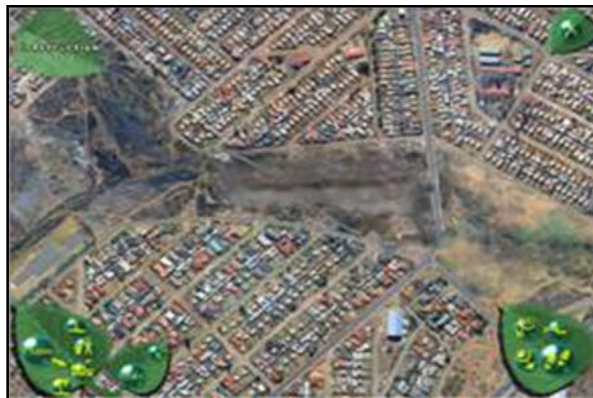
Partner:
Johannesburg
Metropolitan City
Council

In a Nutshell:

Introductory splash page including the Main Menu of the simulation with options to:
(1) view the three main construction phases, and the final (as-is) development;
(2) get a feel for the history of the site as well as browse through a picture gallery of the dam and surrounding areas.

Interface and moving around:

The interface links both to the VR model (described below); and also to a look-up reference section, based on HTML pages which provide additional information on the Dam, as well as the development project itself. This section includes over 200 photos. In any of the four stages of construction, the user uses the mouse to move around and to explore the environment. Audio scripts are also used to introduce the project, as well as the three phases of construction and the final outcome.



Elements of the model:

In the Virtual model, a menu allows the user to view any of four phases of the project that he/she would like to view and explore; (1) before reed removal, (2) after reed removal, (3) during dam construction and (4) the finalized Moroka Dam project. Different views of the park can also be activated: arial view, walking view and one of two over-views. Detail includes the upstream wet-land, parking and play areas.

